



An International Exhibition & Conference on Waste Management,
Sustainability and Environment-Related Products, Services and Technology

9-11 APRIL 2019
Hilton Beirut Metropolitan Palace

The Organizer



✉ info@wastemgmtexpo.com

🌐 www.wastemgmtexpo.com



AN OVERVIEW OF LEBANON

Lebanon is a sovereign state in Western Asia. It is bordered by Syria to the north and east and Palestine to the south, while Cyprus is west across the Mediterranean Sea. Lebanon's location at the crossroads of the Mediterranean Basin and the Arabian hinterland facilitated its rich history and shaped a cultural identity of religious and ethnic diversity.

Despite its small size, the country has developed a well-known culture and has been highly influential in the Arab world. Before the Lebanese Civil War (1975–1990), the country experienced a period of relative calm and renowned prosperity, driven by tourism, agriculture, commerce, and banking. Because of its financial power and diversity in its heyday, Lebanon was referred to as the "Switzerland of the East" during the 1960s, and its capital, Beirut, attracted so many tourists that it was known as "the Paris of the Middle East". At the end of the war, there were extensive efforts to revive the economy and rebuild national infrastructure. Presently, Lebanon has the highest Human Development Index and GDP per capita in the Arab world, to the exclusion of the oil-rich economies of the Persian Gulf.

Waste Management Scenario in Lebanon

On July 17, 2015, the Naameh landfill was shut down, after accumulating eight times its capacity in waste since being opened in 1998. Without a governmental waste management plan, trash began to overflow from the streets and riverbanks of Beirut and Mount Lebanon. Originally intended to receive 2 million tons over 5 years, the landfill was part of an emergency plan to close the Burj Hammoud dump; however, governments extended its lifespan without properly implementing the Ministry of Environment (MoE)'s 2006 plan.



"With its high literacy rate and traditional mercantile culture, Lebanon has traditionally been an important commercial hub for the Middle East."

Source: Lebanon country profile (<http://www.bbc.com>)

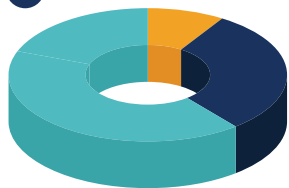
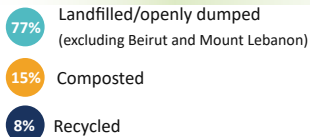
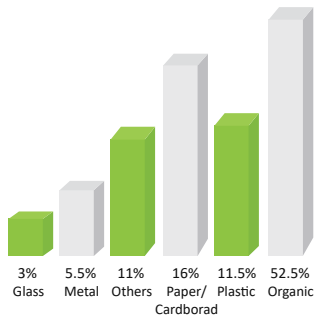


WASTE COMPOSITION IN LEBANON

The municipal management of household garbage or solid waste is one of the simplest, most common signs of a working relationship between the state and its citizens. Lebanon's recent problem-of municipalities leaving garbage to pile up uncollected-has caused public outcry and public demonstrations.

Lebanon's garbage crisis is becoming a threat to the entire Mediterranean environment, according to several of the country's leading experts and academics.

Lebanon produces about 2,040,000 tons of Municipal Solid Waste (MSW) per year. Almost all the MSW generated in Lebanon is collected by public or private haulers (99% in rural areas, 100% in urban); however, management varies from one area to another: 8% is recycled, 15% is composted (several treatment plants already constructed will be put in operation soon, hence increasing percentage), 51% is landfilled and 26% is disposed of in open dumps.



Per Capita MSW Generation : 1.05 Kg/day (weighted average over the country)

Urban Areas : 0.95 - 1.2kg/day

Rural Areas : 0.8kg/day

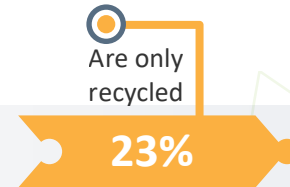
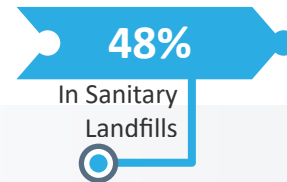
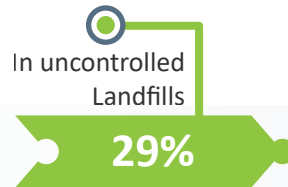
MSW Generation Growth : 1.65 % per year

MSW Generation Growth : 25,040 Tons/year

Industrial Waste : 188,850 Tons/year

Quick Facts

Most industries in Lebanon are light manufacturing industries, mainly belonging to eight branches only: food and beverage (20%), fabricated metal products (16%), non-metallic mineral products (12%), furniture (11%), clothes and dyeing fur (10%), wood products (10%), leather products (6%) and textiles (4%).



OPEN DUMPSITES IN LEBANON: APPROX. 3000 DUMPSITES

“80% waste generated can currently be recycled, composted or bio-digested and exploited, generating economic opportunities while preserving the environment.”

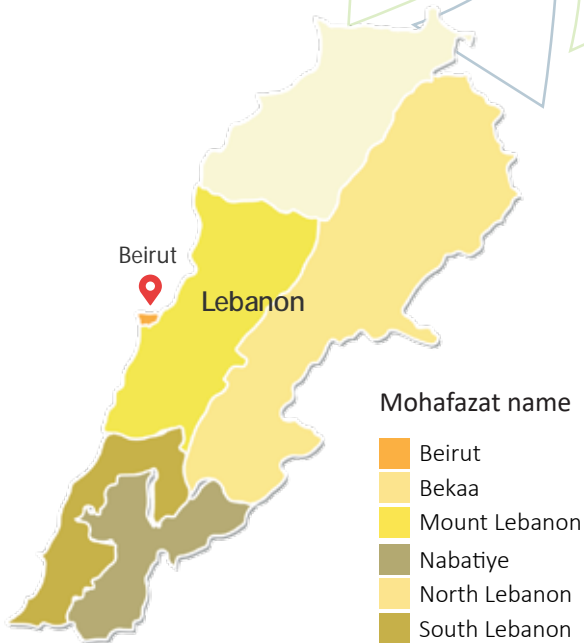
Source: Municipal Waste Management (<http://www.moe.gov.lb>)

National Strategy of Waste Management

In 2005, the MoE has presented a Draft Law on Integrated Solid Waste Management under the METAP programme. It was submitted to CoM on October 14, 2005. The draft law was approved by the CoM in January 2012 and it was accordingly forwarded to the Parliament for ratification. The draft law was reviewed and approved by the Parliament environmental committee and is waiting for final approval by the Parliament general assembly meeting.

The draft law incorporates a solid waste management programs including:

- 1 Providing technical assistance to local departments in case of preparation of local plans for solid waste management
- 2 Reducing the production of solid waste, sort of source.
- 3 Encouraging composting or biological transformation of organic solid waste in a manner identical to the detachment conditions and environmental standards.
- 4 Guiding the civil society on ways to rationalize the consumption of natural resources and thus reduce the solid waste production.



The draft law includes a cost recovery of financing the solid waste management from multiple sources, including:

- 1 Fees imposed directly on the source of the management of solid waste taking into account the quality and characteristics of solid waste generated as well as the cost associated with the management
- 2 Indirect fees
- 3 Fees on products



WHY WASTE MANAGEMENT LEBANON?

WME Lebanon will address a wide variety of waste management issues in an effort to answer some of the burning questions facing our environment, health, industry and economy. These issues include collection, forwarding, storage, reprocessing and recycling of industrial and residual waste.

It will serve as a platform for waste professionals in Lebanon to exchange ideas and information about the latest and advanced waste and recycling methods. It also presents a tremendous opportunity for the leading industry companies to showcase their waste and recycling products and services to the largest gathering of governmental, municipal and private sector waste and recycling professionals in Lebanon.

It is the only dedicated event in Lebanon that will attract the most influential and active decision makers from Lebanon's waste management industry who visit to source new products/services, meet existing suppliers and use the three days to network with their peers.

Waste generation per Mohafaza (2013)

Source: LEBANON-Country-Report (<http://www.moe.gov.lb>)

Mohafaza	Daily Tonnage (Tons)	Percentage of Country
Beirut	600	11
Mount Lebanon	2,250	40
South Lebanon and Nabatiyeh	1,000	18
North Lebanon	1,000	18
Bekaa	750	13
Total	5,600	100

WHY EXHIBIT?

WHY SPEND THE MONEY TO EXHIBIT AT WME 2019?

- ▶ Showcase your solutions/technologies and sell in person to the largest solid waste, recycling and organics buying audience in Lebanon
- ▶ Generate potential sales leads from new and existing customers
- ▶ Increase awareness of your company's products/services
- ▶ Network with existing and new customers
- ▶ Inform customers about your products/services
- ▶ Meet commercial prospects face-to-face
- ▶ Attend and be part of the Waste Management Conference and showcase your expertise
- ▶ Launch new products to key decision makers in the industry
- ▶ Benchmark your products and services against competitors

EXHIBITION PROFILE

- ▶ Environmental solutions companies
- ▶ Environmental monitoring companies
- ▶ Environmental consultants
- ▶ Environmental laboratories
- ▶ Lab equipment manufacturers and suppliers
- ▶ Waste management companies
- ▶ Waste management consultants
- ▶ Waste recycling companies
- ▶ Waste-to-energy companies
- ▶ Landfill operators
- ▶ Renewable energy companies

- Network with industry peers and experts from all facets of environmental and waste management industry and gain valuable knowledge
- Discover alternative methods of waste disposal
- Recognize and promote cost-saving approaches that improve efficiency in waste disposal
- Improve your waste management practices to comply with regulatory standards
- Discover practical waste management tools, strategies, technologies, models and resources that can be applied to your business
- Cut costs of your waste budgets by adopting strategic approaches to minimize waste
- Learn new technologies from waste to energy plans



WHO SHOULD VISIT?

The event will be attended by government representatives, senior executives, policy makers, developers, academicians, architects, engineers, planners, designers, researchers and entrepreneurs including:

- Government Officials and Authorities
- Municipalities
- Building and Construction Agencies
- Hospital and Health Agencies
- Waste Management Agencies
- Waste and Water Management Agencies
- Training Institutes and Research Agencies
- Private and Institutional Investors Commercial and Industrial
- Contractors
- Students and Researchers
- Commercial and Industrial Cleaners
- Environmental Instruments Suppliers
- Building Services
- Environmental Consultants
- Industry Pharmaceutical Industry





Major environmental issues in Lebanon



Waste-to-energy technologies



Solid waste management



Industrial waste and industrial wastewater management



Sewage sludge treatment



Environmental management systems



Hazardous industrial waste management



Medical waste management



Landfill gas recovery



Clean manufacturing practices



Wastewater reuse and recycling



Strategies for raising environmental awareness in Lebanon



Climate change impacts in Lebanon

SPONSORSHIP OPPORTUNITIES

Being a sponsor is an effective way to enhance your organization's visibility at the event, strengthen your existing client relationships and generate new business.

Sponsorship Benefits {rate per sqm}	Lead	Platinum	Gold	Silver	Cocktail Reception	Registration Desk	Lanyard/ Bag /Floor Plan
Pre-event promotional collaterals	✓	✓	✓	✓	✓	✓	✓
Conference Staging	✓	✓	✓	✓	✓		
Exhibition Banners	✓	✓	✓	✓	✓	✓	✓
Website	✓	✓	✓	✓	✓	✓	✓
Showguide- Advert	✓	✓	✓	✓			
Distribution of promotional materials to conference attendees (bag or seat drop)	✓	✓	✓		✓	✓	✓
Additional roll up banners	✓				✓	✓	
Acknowledgement cards	✓				✓	✓	
Conference passes	20	15	10	5	2	2	
Complimentary Exhibition Space (space only)	54m ²	42m ²	30m ²	24m ²	12m ²	9m ²	
Speaking Slot- Keynote Day 1	1						
Speaking Slot		1					
Chairing	✓						
VIP Table x2	✓	✓					






ORGANIZER'S PROFILE



Lebanon Expo is a Lebanon-based professional specialized B2B trade exhibitions, conferences and events organizer founded and managed by a group of experts who are well-versed and have long experience in the Meetings, Incentives, Conferences and Exhibitions (MICE) industry. It is composed of a team of highly capable and experienced members with a collective 30-year experience in developing and organizing successful events across industry verticals.


BOOK YOUR STAND/GET IN TOUCH

 **NADER ABBAS**

 **+961-76785855**

 **info@wastemgmtexpo.com**

 **www.wastemgmtexpo.com**

 **Riad I Soloh, P.O Box: 11-5977, Beirut, Lebanon**



Shell Scheme

USD\$ 350 (per square meter)

This includes white panel walls, fascia and name board, carpeting, two spotlights, a 13-amp power socket, one table and two chairs



Space only

USD\$ 300 (per square meter)

This consists only of bare floor space for those exhibitors who want to design and build their own stand. (Power supply will be charged separately)



© Waste Management Expo Lebanon 2019 ® Lebanon Expo, All Rights Reserved. This material or any portion thereof may not be reproduced or used in any manner whatsoever without the written permission of the organizer.